

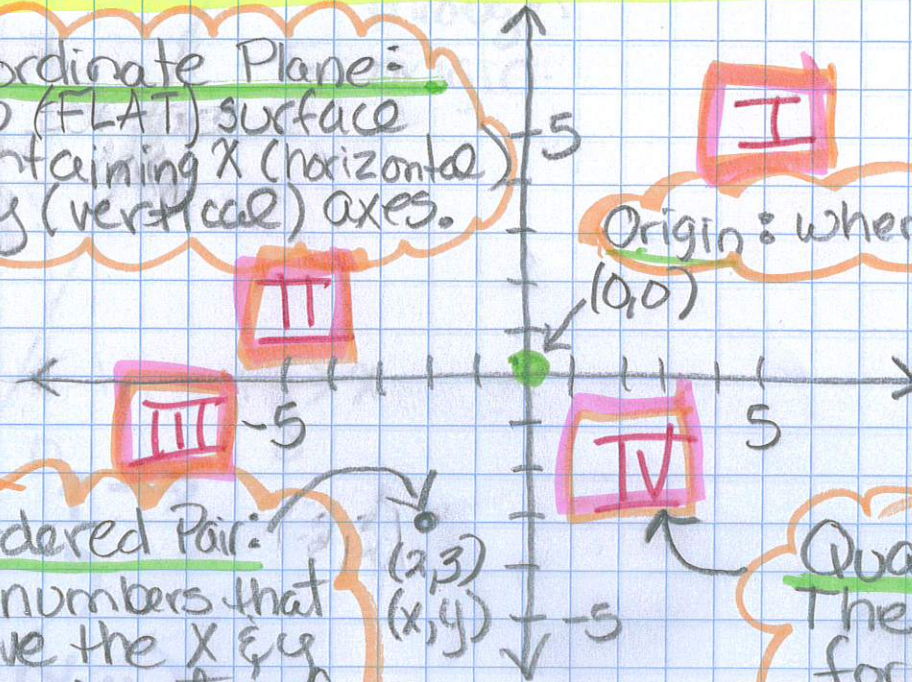
## 5.2 Extension: Graphing Proportions

1/7  
P.2

E.Q.: How can a graph show us if a mathematical relationship is proportional?

Coordinate Plane:

- \*2D (FLAT) surface
- \*containing  $x$  (horizontal) &  $y$  (vertical) axes.



Origin: where  $x$  &  $y$  axes cross

Ordered Pair:

2 numbers that give the  $x$  &  $y$  coordinates of a point on a graph.  $(x,y)$

Quadrants:

The 4 sections formed by the  $x$  &  $y$  axis.  
Counter clockwise

\* Graph is proportional if:

- ① Includes the origin
- ② Straight line.