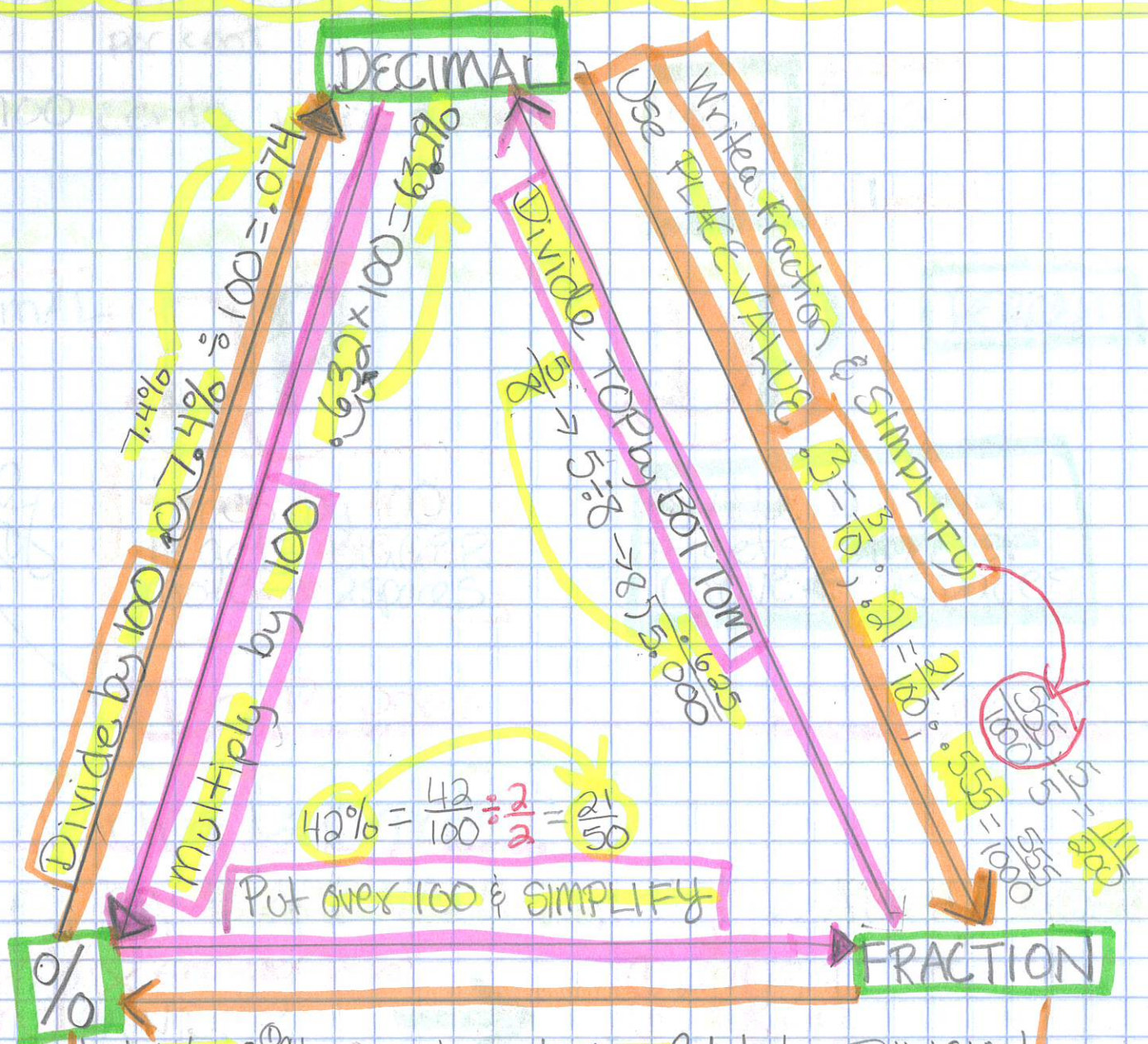


CH6 PERCENTS

p.5 1/22 wed

6.1 Percents & Decimals

E.Q: How does the decimal point move when we change from decimal \rightarrow % OR % \rightarrow Decimal?



1st Way: ① Change to a decimal 1st by DIVISION
② Multiply by 100

2nd Way: Use EQUIVALENT FRACTIONS IF Denominator is a factor of 100.

$$\frac{3}{4} \cdot \frac{25}{25} = 75\%$$

(2, 4, 5, 10, 20, 25, 50)

$$\frac{3}{5} \cdot \frac{20}{20} = \frac{60}{100} = 60\%$$

* Using money to convert between % & Decimals

is like converting between cents & dollars

\$ - decimal form → \$.35

¢ - % form → 35¢
 ↑
 per cent

* 100 cents in a dollar

100¢	\$1.00
100%	1

DECIMAL

DP

times by 100
 # gets BIGGER
 move → 2 spaces

PERCENT

DP

divide by 100
 # gets smaller
 move ← 2 spaces

make heading

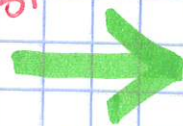
* Dr. Pepper method OR Decimal Point

* Ordering Decimals

order by PLACE VALUE, just like ALPHA ORDER

① ALEXANDER
 ② ALEXANDER
 ③ ALLEN

no letter is lot



① 0.039
 ③ 0.000
 ② 0.340

lot to 1000

↓
 0 1 1
 1 1 1