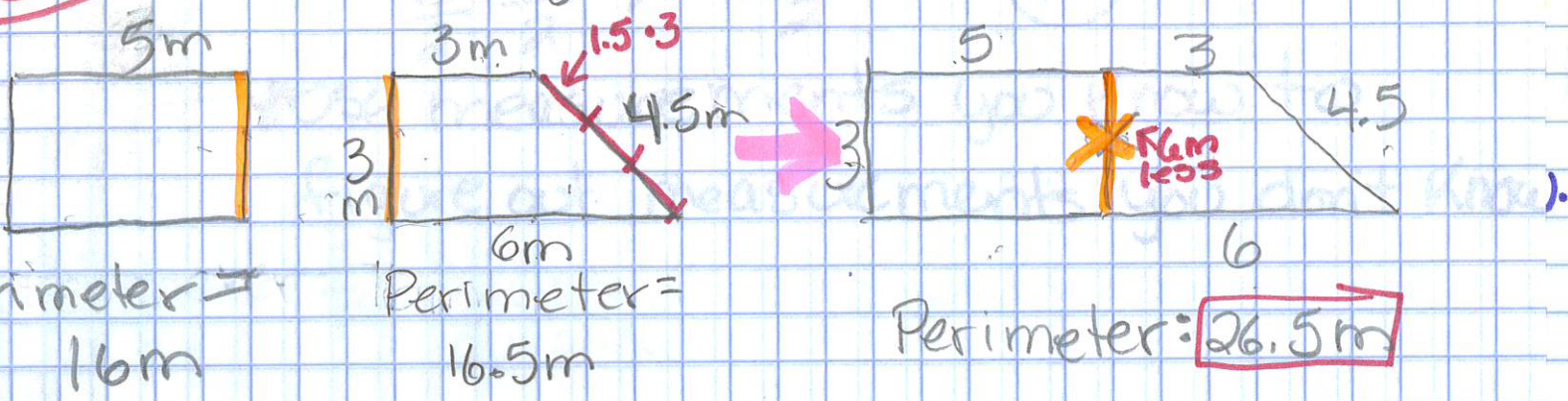


# 8.2 Perimeter of Compound Figures

C.Q: How does the perimeter change when we combine 2 figure or more figures?

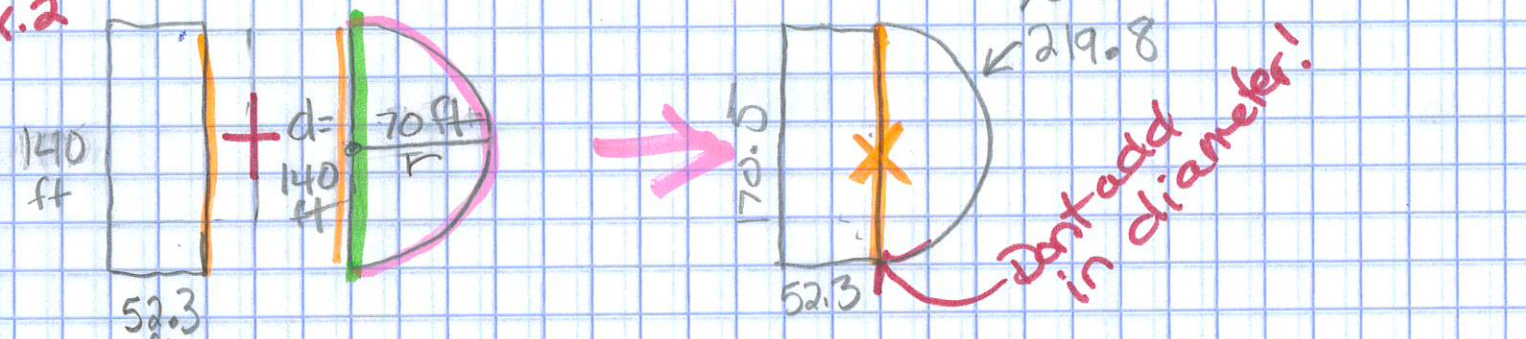
Ex. 1

Diagonal = 1.5



Combine Perimeters:  
 $16m + 16.5m = 32.5m$   
 Total

Ex. 2



Perimeter  
 $40 + 140 + 52.3 + 52.3 =$   
 $384.6ft$

Perimeter  
 $C = \pi d$   
 $= 3.14 (140)$   
 $C = \frac{439.6ft}{2}$

Perimeter  
 $52.3 + 170.5 + 52.3 + 219.8 =$

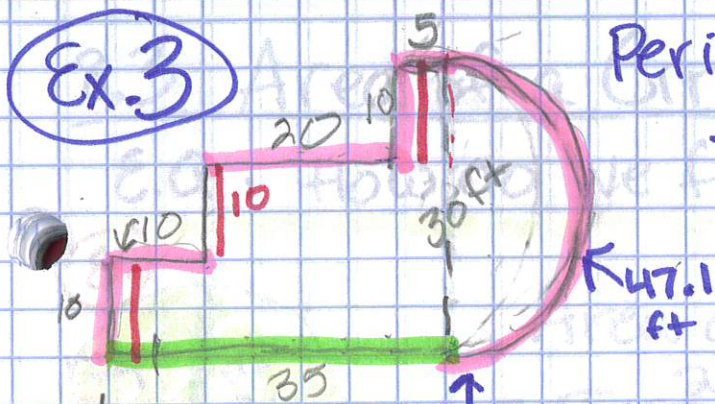
$\frac{C}{2} + d = 219.8ft + 140 = 359.8$

Combined Perimeter  
 $384.6 + 359.8 = 744.4ft$



Ex. 3

Perimeter of a compound figure.



147.01 ft

$47.1$   
 $+ 55.0$   
 $35.0$   
 $10.0$   


---

 $147.1$

$$C = \frac{\pi d}{2} \rightarrow \frac{3.14(30)}{2} = 47.1$$

Use measurements you know to figure out measurements you don't know.