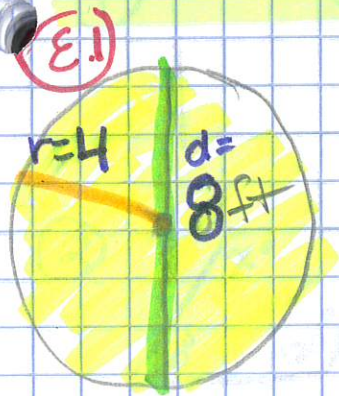


8.3 Area of a Circle

E.Q: How do we find the area of a circle?



Area of a \bigcirc is πr^2

$$A = \pi r^2$$

$$A = 3.14(4^2) \rightarrow A = 3.14(4 \cdot 4) \sim$$

$$3.14(16) \sim 50.24$$

ft²

Area: top of table covered w/ stickies

Perimeter: # of sides of stickies around the outside.



$$A = \pi r^2$$

$$A = 3.14(7^2) \rightarrow 3.14(7)(7)$$

$$\rightarrow 153.86\text{ m}^2$$



$$A = 3.14(7.5)^2 \rightarrow 3.14(7.5)(7.5)$$

$$A = 176.625$$

$$\frac{A}{2} = 88.3125$$

$$88.3\text{ in}^2$$