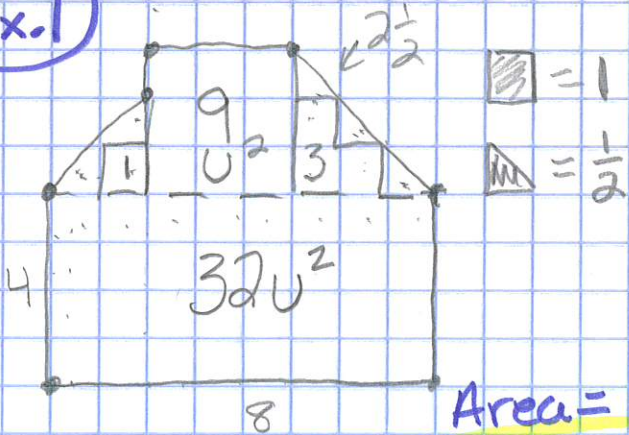


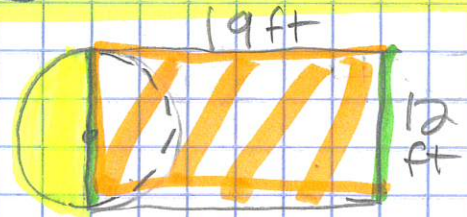
8.4 Area of Composite Figures

EQ: How can we find the combined area of compound shapes.

Ex. 1



Ex. 2



$$A = \pi r^2$$

$$A = 3.14(6^2)$$

$$3.14(6)(6)$$

$$A_{\Delta} \sim 113.04$$

$$\frac{2}{2}$$

$$A_{\Delta} \sim 56.52 \text{ ft}^2$$



$$19 \cdot 12 = 228 \text{ ft}^2$$

Combine

$$\Delta + \square = 56.52 + 228 =$$

$$284.52$$

$$284.5 \text{ ft}^2$$